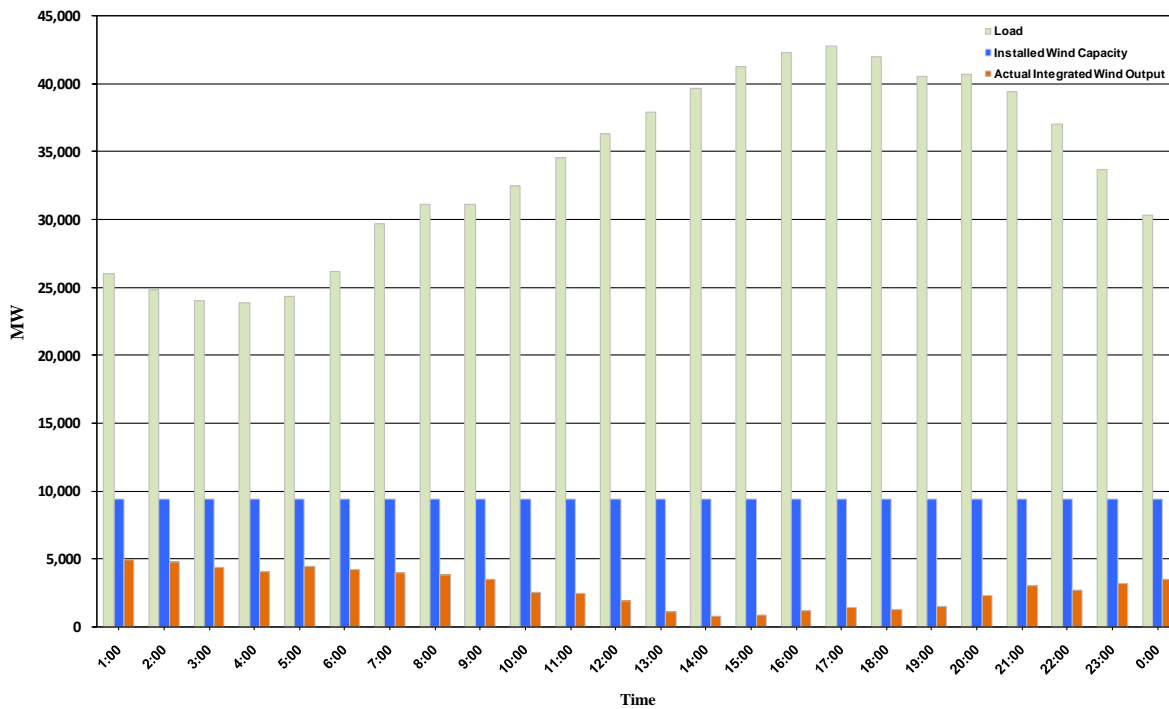




ERCOT Grid Operations Wind Integration Report: 10/18/10

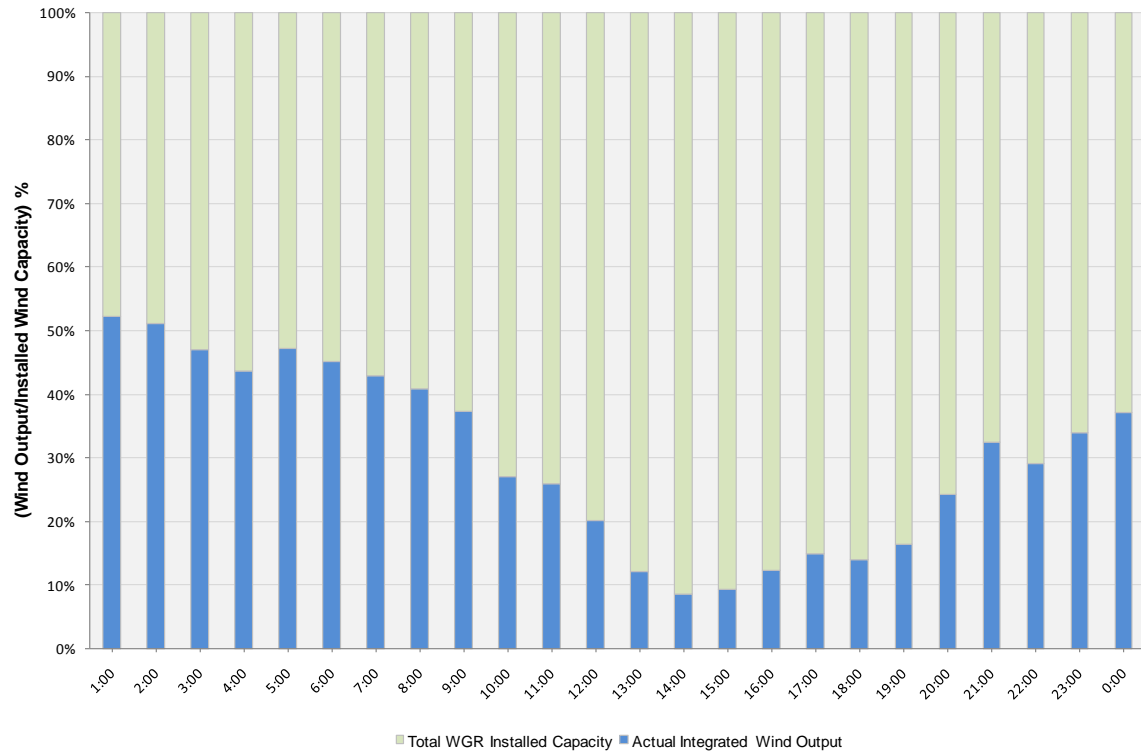
Peak Load	42,784 MW
Load Peak Hour	17
Wind Record 06/12/10	7016 MW
Max Wind value	5024 MW
Wind Peak Hour	00:20:12
Wind Integration %	19.13

Hourly Average Actual Load vs. Actual Wind Output
10-18-2010

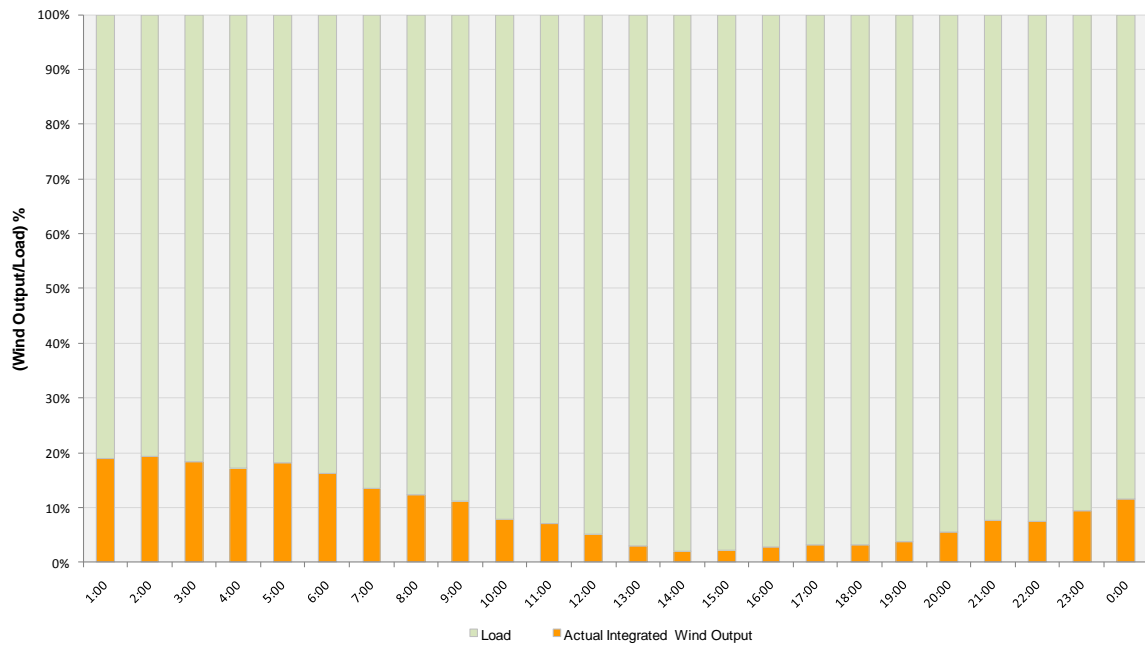




Actual Wind Output as a Percentage of the Total Installed Wind Capacity
10-18-2010



Actual Wind Output as a Percentage of the ERCOT Load
10-18-2010





ERCOT Load vs. Actual Wind Output 10/11/10 - 10/18/10

